



**QIAO**  **CHARGE UP,  
DRIVE ON.**

Providing reliable and convenient power to  
electric vehicles all over the world.

**BROCHURE**



## OUR STORY

At QIAO, our mission is to provide reliable and convenient power to electric vehicles all over the world. We believe that the most practical and often overlooked products tend to play the biggest role in ushering modern day conveniences, technological advancements, and sustainable practices into our daily lives. That's why we've dedicated ourselves to designing and producing high-quality car chargers that provide reliable power to all types of electric vehicles. We're driven to usher our society into a future with less fossil fuel consumption and vehicular pollution. Through our trusted products and dedicated give-back programs, we're working to create more efficient transportation methods and a cleaner environment for all. It's time to charge up and drive on. Join us for the ride.

## OUR MISSION

To provide reliable and convenient power to electric vehicles all over the world.

## OUR VISION

To charge the ongoing environmental revolution for a pollution-free future.





## CORE VALUES

### TRUST

We strive to earn the trust of our customers by providing consistently high-quality products and transparent and attentive customer service.

### COURAGE

Courage is a vital trait required to build a future with more technological efficiency, less pollution, better products, and a higher quality of life for all.

### COMPASSION

Whether we're communicating with customers, working with colleagues, thoughtfully designing our products, or participating in our give-back initiatives, we operate with compassion as our north star.

### INNOVATION

Out-of-the-box thinking propels ground-breaking designs, optimized systems, and inventions that improve our quality of life and the health of the world around us.

### SUPPORT

Our products support the efficient operation of electric vehicles, our team supports one another, and our customer service team supports our valued clients.

## WHY

We want to provide reliable and convenient power to electric vehicles all over the world while building towards a pollution-free future.

## WHO

Our primary customers are businesses (B2B) that sell or provide car charging stations to customers. Our secondary customers are individual consumers (B2C) who own electric vehicles.

## WHAT

We produce a selection of high-quality, safe, and dependable electric vehicle charging stations and accessories.

## WHERE

Our products are available to easily view, learn more about, and order online - primarily via our website.



# COMPANY PROFILE

Founded in 2006, Qunchuang New Energy is the global marketing and intelligent manufacturing center of Intelligent Manufacturing, headquartered in Shenzhen, the capital of science and technology manufacturing. Qunchuang New Energy has a 5A-level modern office area, over 6,000 square meters of high-end intelligent manufacturing bases, integrating R&D design, mold manufacturing, product production and logistics support. It is a company with a design and R&D team of more than 30 members and a production and manufacturing team of more than 300 members, Qunchuang New Energy is a certified high-tech enterprise with more than 60 international design awards and nearly 70 patents.

Relying on excellent R&D and high-end intelligent manufacturing capabilities, and technical research and cooperation with professional scientific research institutions and colleges at home and abroad, Qunchuang New Energy has developed nearly 100 variations of wall-mounted EV chargers, portable EV chargers and peripheral innovative products in the field of renewable energy vehicle charging equipment. Qunchuang New Energy combines practicality and creativity with design, blends perfect colors and shapes, seeks trend-sensitive modern fashion styles, and constantly presents fashionable, passionate and innovative high-quality products in front of you, thus winning the trust and recognition of consumers and customers.

Qunchuang aspires to be the driver of global renewable energy development and takes providing the best renewable energy electric and ecological travel solutions as its goal, it continues to innovate and challenge itself on a global scale. Qunchuang has established a long-term and stable cooperative relationship with many automobile sellers, retailers and terminal agents, taking the international strategy to a new level.



**QIAO**   
CHARGE UP, DRIVE ON.

# 10 YEAR

CHARGE UP  
DRIVE ON

## ENTERPRISE MISSION

To provide reliable and convenient power to electric vehicles all over the world.

## ENTERPRISE VISION

To charge the ongoing environmental revolution for a pollution-free future.

## VALUES

Trust, innovation, courage, support  
compassion



Established in 2005, Times Weiye Plastic Hardware is a large-scale production enterprises specializing in providing customers with mold opening, injection molding, manufacturing and other services in one.

2005



In 2009, in response to the development needs of the times, Shenzhen Qunchuang Electronics Co., Ltd. is a technology-based enterprise specializing in manufacturing molds and designing and developing various digital products, and it is divided into industrial design department, mold development department, injection molding department and assembly department.

2009



In September 2014, our company passed ISO9001:2000 and system certification.

2014



In 2018, our company successively reached strategic cooperation with well-known enterprises such as Xiaomi, 360, Alibaba, Skyworth, and Haier etc..

2018

# BRAND ROAD



In 2019, in order to expand the scale and office needs, our company moved to a 6500-square-meter independent factory building, creating a management team that has produced for Panasonic and Philips.



In 2020, our company officially entered the new energy AC EV charger industry, established a new energy business department, and created a software and hardware development team of more than 30 people.



In 2022, 8 series of products including wall-mounted charger, portable charger, charging connector, adapter, connector holder, double-headed connector with cable, extension cable and electrical appliances was completed.



In 2023, the global brand QIAOCC was established and its products will be sold all over the world.

2019

2020

2022

2023

**OUR PRODUCTS**

**WALL-MOUNTED  
AC EV CHARGER**



Q5



Q6



Q7



Q8

**PORTABLE AC  
EV CHARGER**



Q20



Q21





## EV CHARGER CONNECTOR



Type GB/T



Type 2



Type 1



Type Tesla

## ADAPTER



Type 1  
To  
Type Tesla



Type Tesla  
To  
Type 1



Type GB/T  
To  
Type 2



Type 2 To  
Type GB/T  
Gen 1



Type 2  
To  
Type GB/T  
Gen 2

## CONNECTOR HOLDER



Type GB/T



Type Tesla



Type 1



Type 2

## EV CHARGING CABLE



Type GB/T



Type 2

## EXTENSION CABLE



Type GB/T



Type 2



Type 1



Tesla

## DISCHARGER



Type GB/T for car



Type GB/T for connector



Type 2 for car



Type 2 for connector



Type 1 for car



Type 1 for connector

# Q5 EV CHARGER

## For home

### PRODUCT VERSION:

Type 1	Type 2	Type Tesla	Type GB/T
--------	--------	------------	-----------

### POWER:

7KW	11KW	22KW
-----	------	------

### CURRENT:

16A	32A
-----	-----



### STYLE



Fingerprint/password



LED

## Q5 SPECIFICATION

Specification classification	Item	Parameter
Input	Power supply type	Single phase, three phase
	Rated power	7KW / 11KW / 22KW
	Voltage	Single-phase (120-240V), three-phase (380-400V)
	Current	16A, 32A
	Frequency	50/60Hz
Output	Rated power	7KW / 11KW / 22KW
	Voltage	Single-phase (120-240V), three-phase (380-400V)
	Current	16A, 32A
	Frequency	50/60Hz
Function	Starting mode	Plug and charge, fingerprint/password, RFID, remote reservation
	Display type	LED
	Network	Bluetooth/wifi
	DLB	Non-supported
	OCP	Non-supported
Protection	RCD	Type A, Type A+6, CCID20
	Electrical protection	Input overvoltage, Low temperature discharge, Output short circuit, Anti-lightning strike, Charging overvoltage, Charging overcurrent, High temperature recharging, Low temperature charging, Discharge undervoltage, Discharge overcurrent, High temperature discharging.
	Emergency stop	Support
	IP rating	IP66
	Fall protection	IK10
	Insulation resistance	$\geq 10M\Omega$
	Weathering resistance	F1
Environment	Cooling method	Natural cooling
	Operating temperature	-30°C~+50°C
	Storage temperature	-40°C~+80°C
	Operating humidity	5%~95%
	Altitude	<2000M
Package	Product size	23*16*7.5 cm
	Charging connector holder	1 piece
Others	Installation type	wall-mounted, pole-mounted
	Power cord	Plug, hardwired
	Cable length	5M or 7.62M
	Material	PC9010
	Warranty period	15 months
	Efficiency	$\geq 98\%$

# Q6 EV CHARGER

## For Home & Commercial

### PRODUCT VERSION:

Type GB/T	Type 1	Type 2	Type Tesla
-----------	--------	--------	------------

### POWER:

7KW	11KW	22KW
-----	------	------

### CURRENT:

16A	32A	40A	48A
-----	-----	-----	-----



### STYLE

				
DLB	4.3-inch Screen	7-inch Screen	LED	fingerprint password

## Q6 SPECIFICATION

Specification classification	Item	Parameter
Input	Power supply type	Single phase, three phase
	Rated power	7KW / 11KW / 22KW
	Voltage	Single-phase (120-240V), three-phase (380-400V)
	Current	16A, 32A, 40A, 48A
	Frequency	50/60Hz
Output	Rated power	7KW / 11KW / 22KW
	Voltage	Single-phase (120-240V), three-phase (380-400V)
	Current	16A, 32A, 40A, 48A
	Frequency	50/60Hz
Function	Starting mode	Plug and charge, Fingerprint/password, RFID, remote reservation
	Display type	LED, LCD 4.3 inch, LCD 7 inch
	Network	4G, Ethernet, Bluetooth/wifi
	DLB	Support
	OCPP	Support
Protection	RCD	Type A, Type A+6, CCID20
	Electrical protection	Input overvoltage, Low temperature discharge, Output short circuit, Anti-lightning strike, Charging overvoltage, Charging overcurrent, High temperature charging, Low temperature charging, Discharge undervoltage, Discharge overcurrent, High temperature discharging.
	Emergency stop	Support
	IP rating	IP66
	Fall protection	IK10
	Insulation resistance	$\geq 10M\Omega$
	Weathering resistance	F1
Environment	Cooling method	Natural cooling
	Operating temperature	-30°C~+50°C
	Storage temperature	-40°C~+80°C
	Operating humidity	5%~95%
	Altitude	<2000M
Package	Product size	30*18*12cm
	Charging connector holder	1 piece
Others	Installation type	Wall-mounted, pole-mounted
	Power cord	Plug, hardwired
	Cable length	5M or 7.62M
	Material	PC9010
	Warranty period	15 months
	Efficiency	$\geq 98\%$

# Q7 EV CHARGER

## For home & Commercial

### PRODUCT VERSION:

Type 2

Type GB/T

### POWER:

7KW

11KW

22KW

### CURRENT:

16A

32A



**STYLE**



## Q7 SPECIFICATION

Specification classification	Item	Parameter
Input	Power supply type	Single phase, three phase
	Rated power	7KW / 11KW / 22KW
	Voltage	Single-phase (230-240V), three-phase (380-400V)
	Current	16A, 32A
	Frequency	50/60Hz
Output	Rated power	7KW / 11KW / 22KW
	Voltage	Single-phase (230-240V), three-phase (380-400V)
	Current	16A, 32A
	Frequency	50/60Hz
Function	Starting mode	Plug and charge, RFID, QR
	Display type	LCD 3.5 inch
	Network	4G, Ethernet (RJ45)
	DLB	Non-supported
	Ocpp	Support
Protection	RCD	Type A, Type A+6, CCID20
	Electrical protection	Input overvoltage,Low temperature discharge,Output short circuit,Anti-lightning strike,Charging overvoltage,Charging overcurrent,High temperaturecharging,Low temperature charging,Discharge undervoltage,Discharge overcurrent,High temperature discharging.
	Emergency stop	Support
	IP rating	IP66
	Fall protection	IK10
	Insulation resistance	≥10MΩ
	Weathering resistance	F1
Environment	Cooling method	Natural cooling
	Operating temperature	-30°C~+50°C
	Storage temperature	-40°C~+80°C
	Operating humidity	5%~95%
	Altitude	<2000M
Package	Product size	30*18*12cm
	Charging connector holder	1 piece
Others	Installation type	wall-mounted, pole-mounted
	Power cord	Plug, hardwired
	Cable length	/
	Material	PC9010
	Warranty period	15 months
	Efficiency	≥98%

# Q8 EV CHARGER

## For home & Commercial

### PRODUCT VERSION:

Type 1

Type 2

Type Tesla

Type GB/T

### POWER:

7KW

11KW

22KW

### CURRENT:

16A

32A

40A

48A



### STYLE



4.3-inch  
Screen



LED

## Q8 SPECIFICATION

Specification classification	Item	Parameter
Input	Power supply type	Single phase, three phase
	Rated power	7KW / 11KW / 22KW
	Voltage	Single-phase (120-240V), three-phase (380-400V)
	Current	16A, 32A, 40A, 48A
	Frequency	50/60Hz
Output	Rated power	7KW / 11KW / 22KW
	Voltage	Single-phase (120-240V), three-phase (380-400V)
	Current	16A, 32A, 40A, 48A
	Frequency	50/60Hz
Function	Starting mode	Plug and charge, RFID, remote reservation
	Display type	LED, LCD 4.3 inch
	Network	4G, Ethernet, Bluetooth/wifi
	DLB	Non-supported
	OCP	Support
Protection	RCD	Type A, Type A+6, CCID20
	Electrical protection	Input overvoltage, Low temperature discharge, Output short circuit, Anti-lightning strike, Charging overvoltage, Charging overcurrent, High temperature recharging, Low temperature charging, Discharge undervoltage, Discharge overcurrent, High temperature discharging.
	Emergency stop	Support
	IP rating	IP66
	Fall protection	IK10
	Insulation resistance	≥10MΩ
	Weathering resistance	F1
Environment	Cooling method	Natural cooling
	Operating temperature	-30°C~+50°C
	Storage temperature	-40°C~+80°C
	Operating humidity	5%~95%
	Altitude	<2000M
Package	Product size	30*18*12cm
	Charging connector holder	1 piece
Others	Installation type	wall-mounted, pole-mounted
	Power cord	Plug, hardwired
	Cable length	5M or 7.62M
	Material	PC9010
	Warranty period	15 months
	Efficiency	≥98%

# Q20 2 IN 1 PORTABLE EV CHARGER AT HOME & OUTDOOR

## PRODUCT VERSION:

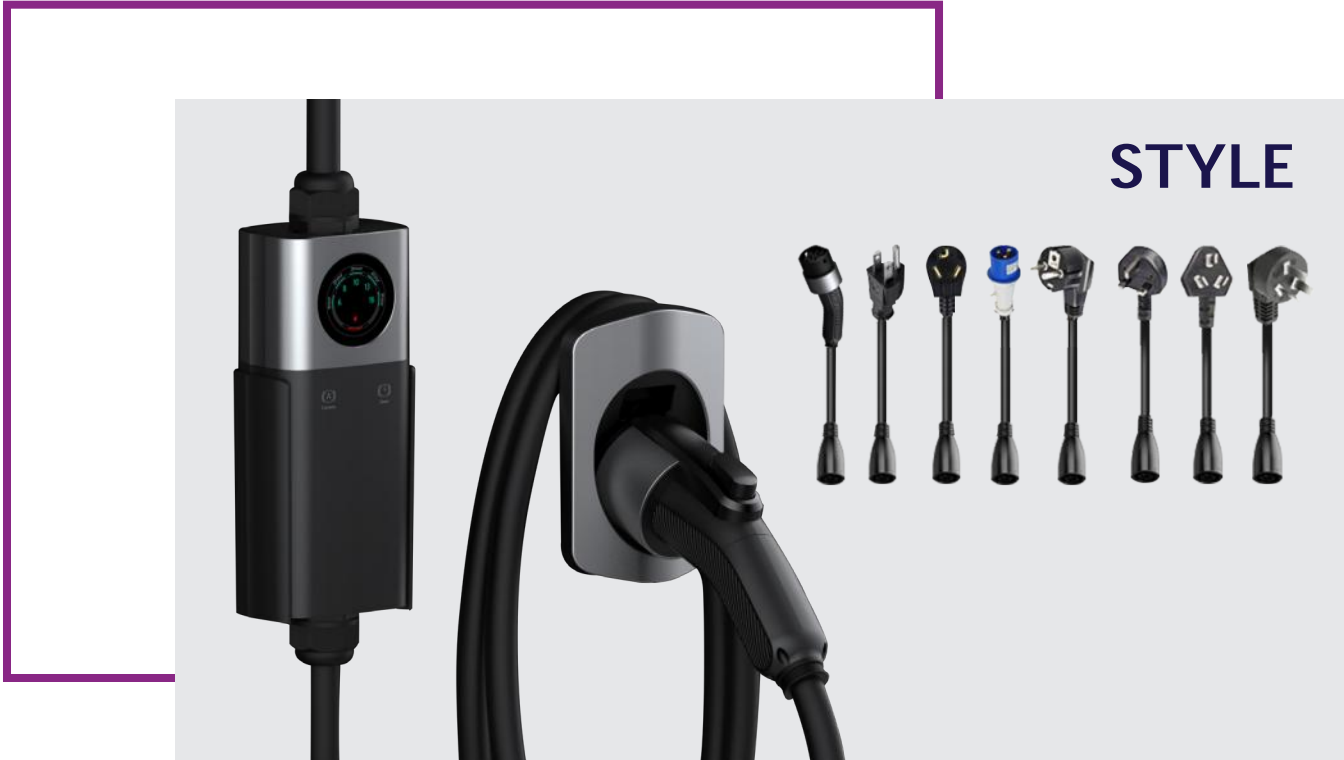
Type 1	Type 2	Type Tesla	Type GB/T
--------	--------	------------	-----------

## POWER:

3.5KW	7KW
-------	-----

## CURRENT:

16A to 32A
------------



## Q20 SPECIFICATION

Specification classification	Item	Parameter
Input	Power supply type	Single phase
	Rated power	3.5KW / 7KW
	Voltage	Single-phase (120V-240V)
	Current	16A to 32A
	Frequency	50/60Hz
Output	Rated power	3.5KW / 7KW
	Voltage	Single-phase (120V-240V)
	Current	16A to 32A
	Frequency	50/60Hz
Function	Starting mode	Plug and charge, remote reservation
	Display type	LED, LCD 2.8 inch
	Network	Bluetooth/wifi
	DLB	Non-supported
	OCP	Non-supported
Protection	RCD	Type A, Type A+6, CCID20
	Electrical protection	Input overvoltage,Low temperature discharge,Output short circuit,Anti-lightning strike,Charging overvoltage,Charging overcurrent,High temperature recharging,Low temperature charging,Discharge undervoltage,- Discharge overcurrent,High temperature discharging.
	Emergency stop	/
	IP rating	IP66
	Fall protection	IK10
	Insulation resistance	≥10MΩ
	Weathering resistance	F1
Environment	Cooling method	Natural cooling
	Operating temperature	-30°C~+50°C
	Storage temperature	-40°C~+80°C
	Operating humidity	5%~95%
	Altitude	<2000M
Package	Product size	26.5*9.6*6.8cm
	Charging connector holder	1 piece
Others	Installation type	wall-mounted, pole-mounted
	Power cord	Plug
	Cable length	5M
	Material	PC9010
	Warranty period	15 months
	Efficiency	≥98%

# Q21 2 IN 1 PORTABLE EV CHARGER AT HOME & OUTDOOR

## PRODUCT VERSION:

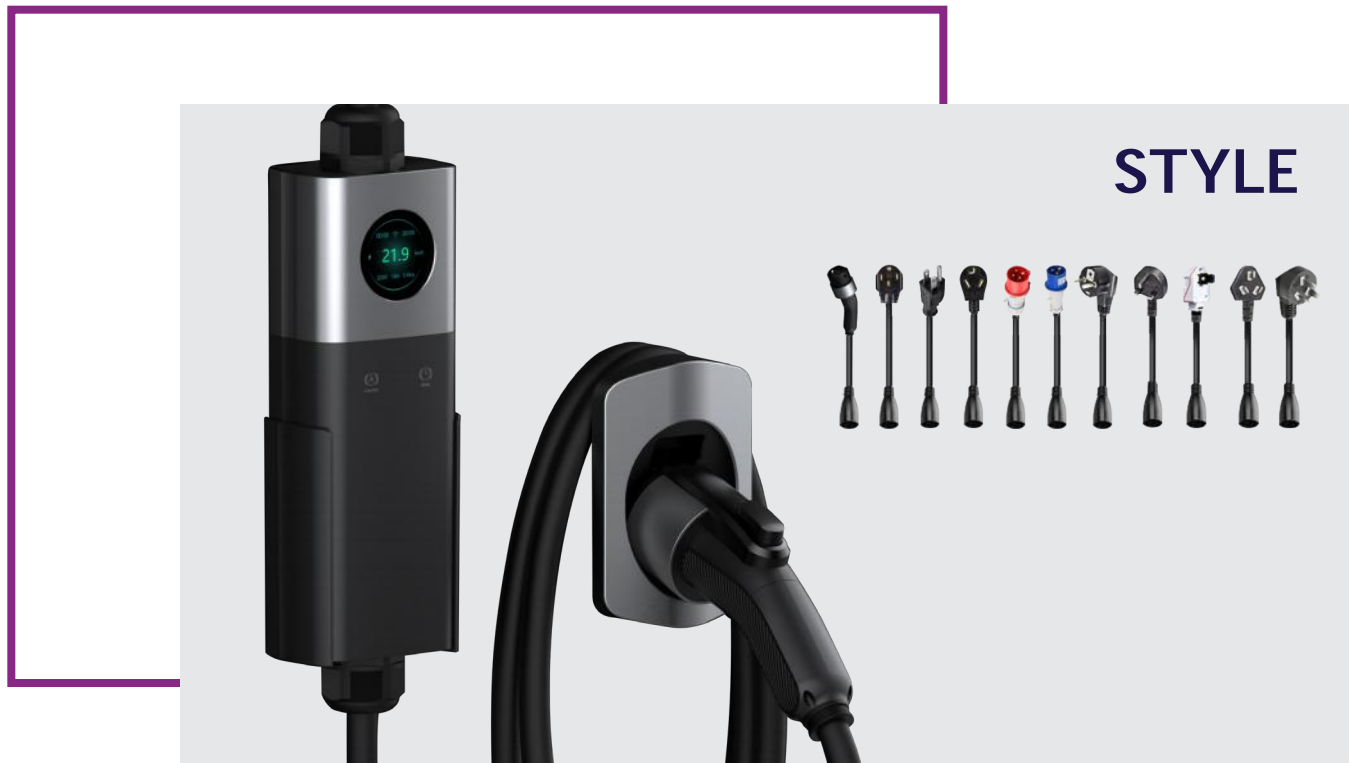
Type 1	Type 2	Type Tesla	Type GB/T
--------	--------	------------	-----------

## POWER:

7KW	9.6KW	11KW	22KW
-----	-------	------	------

## CURRENT:

16A to 40A
------------



## Q21 SPECIFICATION

Specification classification	Item	Parameter
Input	Power supply type	Single phase, three phase
	Rated power	7KW / 9.6KW / 11KW / 22KW
	Voltage	Single-phase ( 120-240V), three-phase (380-400V)
	Current	16A to 40A
	Frequency	50/60Hz
Output	Rated power	7KW / 9.6KW / 11KW / 22KW
	Voltage	Single-phase ( 120-240V), three-phase (380-400V)
	Current	16A to 40A
	Frequency	50/60Hz
Function	Starting mode	Plug and charge, remote reservation
	Display type	LED, LCD 2.8 inch
	Network	Bluetooth/wifi
	DLB	Non-supported
	OCP	Non-supported
Protection	RCD	Type A, Type A+6, CCID20
	Electrical protection	Input overvoltage,Low temperature discharge,Output short circuit,Anti-lightning strike,Charging overvoltage,Charging overcurrent,High temperature recharging,Low temperature charging,Discharge undervoltage,Discharge overcurrent,High temperature discharging.
	Emergency stop	/
	IP rating	IP66
	Fall protection	IK10
	Insulation resistance	≥10MΩ
	Weathering resistance	F1
Environment	Cooling method	Natural cooling
	Operating temperature	-30°C~+50°C
	Storage temperature	-40°C~+80°C
	Operating humidity	5%~95%
	Altitude	<2000M
Package	Product size	33.5*9.8*7cm
	Charging connector holder	1 piece
Others	Installation type	wall-mounted, pole-mounted
	Power cord	Plug
	Cable length	5M
	Material	PC9010
	Warranty period	15 months
	Efficiency	≥98%

# EV CHARGER CONNECTOR



Q30 TYPE GB/T



Q31 TYPE 2



Q32 TYPE 1



Q33 TESLA

SPECIFICATION				
MODEL	POWER	CABLE SPECIFICATION	CABLE MATERIAL	CABLE LENGTH
Q30 TYPE GB/T	3.5KW/16A/single phase	3*2.5mm <sup>2</sup> +1*0.75mm <sup>2</sup>	TPE	5M or Customization
	7KW/32A/single phase	3*6mm <sup>2</sup> +1*0.75mm <sup>2</sup>	TPE	5M or Customization
	11KW/16A/three phase	5*2.5mm <sup>2</sup> +1*0.75mm <sup>2</sup>	TPE	5M or Customization
	22KW/32A/three phase	5*6mm <sup>2</sup> +1*0.75mm <sup>2</sup>	TPE	5M or Customization
Q31 TYPE 2	3.5KW/16A/single phase	3*2.5mm <sup>2</sup> +1*0.75mm <sup>2</sup>	TPU	5M or Customization
	7KW/32A/single phase	3*6mm <sup>2</sup> +1*0.75mm <sup>2</sup>	TPU	5M or Customization
	11KW/16A/three phase	5*2.5mm <sup>2</sup> +1*0.75mm <sup>2</sup>	TPU	5M or Customization
	22KW/32A/three phase	5*6mm <sup>2</sup> +1*0.75mm <sup>2</sup>	TPU	5M or Customization
Q32 TYPE 1	3.5KW/16A/single phase	3*14AWG+1*18AWG	TPE	7.62M or Customization
	7KW/32A/single phase	3*10AWG+1*18AWG	TPE	7.62M or Customization
	11KW/48A/single phase	2*8AWG+1*10AWG+1*18AWG	TPE	7.62M or Customization
Q33 TESLA	3.5KW/16A/single phase	3*14AWG+1*18AWG	TPE	7.62M or Customization
	7KW/32A/single phase	3*10AWG+1*18AWG	TPE	7.62M or Customization
	11KW/48A/single phase	2*8AWG+1*10AWG+1*18AWG	TPE	7.62M or Customization



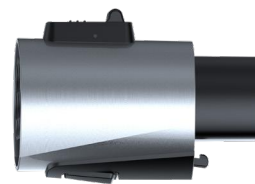
# ADAPTER



Q40 TYPE 1 TO TESLA



Q41 TESLA TO TYPE 1



Q42 TYPE 2 TO  
TYPE GB/T 1ST GEN

MODEL	SPECIFICATION	
Q40 TYPE 1 TO TESLA	Input voltage: AC100-240V	Output voltage: AC100-240V
	Output current: >60A	Efficiency: ≥98
	Contact resistance: <0.5MΩ	Insulation resistance: 500MΩ
	Flame Retardant Class: UL94V-0	Plug and Pull life: 10000
	Operating ambient temperature: -30°C~+55°C	Storage ambient temperature: -40°C~+80°C
	IP rating: IP55	Body Size: 100*65*53mm
	Gift Box Size: 110*70*60mm	Weight: 0.3Kg
Q41 TESLA TO TYPE 1	Input voltage: AC100-240V	Output voltage: AC100-240V
	Output current: >60A	Efficiency: ≥98
	Contact resistance: <0.5MΩ	Insulation resistance: 500MΩ
	Flame Retardant Class: UL94V-0	Plug and Pull life: 10000
	Operating ambient temperature: -30°C~+55°C	Storage ambient temperature: -40°C~+80°C
	IP Grade: IP55	Body Size: 120*70*58mm
	Gift Box Size: 130mmx65mmx70mm	Weight: 0.4Kg
Q42 TYPE 2 TO TYPE GB/T 1ST GEN	Input voltage: AC100-400V	Output voltage: AC100-400V
	Output current: >50A	Efficiency: ≥98
	Contact resistance: <0.5MΩ	Insulation resistance: 500MΩ
	Flame Retardant Class: UL94V-0	Plug and Pull life: 10000
	Operating ambient temperature: -30°C~+55°C	Storage ambient temperature: -40°C~+80°C
	IP Grade: IP55	Body Size: 129*69*92mm
	Gift Box Size: 130*72*85mm	Weight: 0.4Kg

# CONNECTOR HOLDER



Q50 TYPE GB/T



Q51 TYPE 2



Q52 TYPE 1



Q53 TYPE TESLA

MODEL	SPECIFICATION
Q50 TYPE GB/T	Material: PC940
	Working Temperature: -30°C~+50°C
	Body Size: 103.45*73*151.45mm
	Weight: 220g/240g
	QTY: 45 pcs
Q51 TYPE 2	Material: PC940
	Working Temperature: -30°C~+50°C
	Body Size: 103.45*73*151.45mm
	Weight: 220g/240g
	QTY: 45 pcs
Q52 TYPE 1	Material: PC940
	Working Temperature: -30°C~+50°C
	Body Size: 103.45*73*151.45mm
	Weight: 220g/240g
	QTY: 45 pcs
Q53 TYPE TESLA	Material: PC940
	Working Temperature: -30°C~+50°C
	Body Size: 103.45*73*151.45mm
	Weight: 220g/240g
	QTY: 45 pcs

# CHARGING CABLE



Q60 TYPE GB/T



Q61 TYPE 2

SPECIFICATION				
MODEL	POWER	SPECIFICATION	CABLE MATERIAL	CABLE LENGTH
Q60 TYPE GB/T	3.5KW/16A/single phase	3*2.5mm <sup>2</sup> +1*0.75mm <sup>2</sup>	TPE	5M or Customization
	7KW/32A/single phase	3*6mm <sup>2</sup> +1*0.75mm <sup>2</sup>	TPE	5M or Customization
	11KW/16A/three phase	5*2.5mm <sup>2</sup> +1*0.75mm <sup>2</sup>	TPE	5M or Customization
	22KW/32A/three phase	5*6mm <sup>2</sup> +1*0.75mm <sup>2</sup>	TPE	5M or Customization
Q61 TYPE 2	3.5KW/16A/single phase	3*2.5mm <sup>2</sup> +1*0.75mm <sup>2</sup>	TPU	5M or Customization
	7KW/32A/single phase	3*6mm <sup>2</sup> +1*0.75mm <sup>2</sup>	TPU	5M or Customization
	11KW/16A/three phase	5*2.5mm <sup>2</sup> +1*0.75mm <sup>2</sup>	TPU	5M or Customization
	22KW/32A/three phase	5*6mm <sup>2</sup> +1*0.75mm <sup>2</sup>	TPU	5M or Customization

## EXTENSION CABLE



Q70 TYPE GB/T



Q71 TYPE 2



Q72 TYPE 1



Q73 TESLA

SPECIFICATION				
MODEL	POWER	SPECIFICATION	CABLE MATERIAL	CABLE LENGTH
Q70 TYPE GB/T	3.5KW/16A/single phase	3*2.5mm <sup>2</sup> +1*0.75mm <sup>2</sup>	TPE	5M or Customization
	7KW/32A/single phase	3*6mm <sup>2</sup> +1*0.75mm <sup>2</sup>	TPE	5M or Customization
	11KW/16A/three phase	5*2.5mm <sup>2</sup> +1*0.75mm <sup>2</sup>	TPE	5M or Customization
	22KW/32A/three phase	5*6mm <sup>2</sup> +1*0.75mm <sup>2</sup>	TPE	5M or Customization
Q71 TYPE 2	3.5KW/16A/single phase	3*2.5mm <sup>2</sup> +1*0.75mm <sup>2</sup>	TPU	5M or Customization
	7KW/32A/single phase	3*6mm <sup>2</sup> +1*0.75mm <sup>2</sup>	TPU	5M or Customization
	11KW/16A/three phase	5*2.5mm <sup>2</sup> +1*0.75mm <sup>2</sup>	TPU	5M or Customization
	22KW/32A/three phase	5*6mm <sup>2</sup> +1*0.75mm <sup>2</sup>	TPU	5M or Customization
Q72 TYPE 1	3.5KW/16A/single phase	3*14AWG+1*18AWG	TPE	5M or Customization
	7KW/32A/single phase	3*10AWG+1*18AWG	TPE	5M or Customization
	11KW/16A/single phase	2*8AWG+1*10AWG+1*18AWG	TPE	5M or Customization
Q73 TESLA	3.5KW/16A/single phase	3*14AWG+1*18AWG	TPE	5M or Customization
	7KW/32A/single phase	3*10AWG+1*18AWG	TPE	5M or Customization
	11KW/16A/single phase	2*8AWG+1*10AWG+1*18AWG	TPE	5M or Customization

# DISCHARGER



Q80 TYPE GB/T  
FOR CAR



Q81 TYPE GB/T FOR  
CONNECTOR



Q82 TYPE 2 FOR  
CAR



Q83 TYPE 2 FOR  
CONNECTOR



Q84 TYPE 1 FOR  
CAR

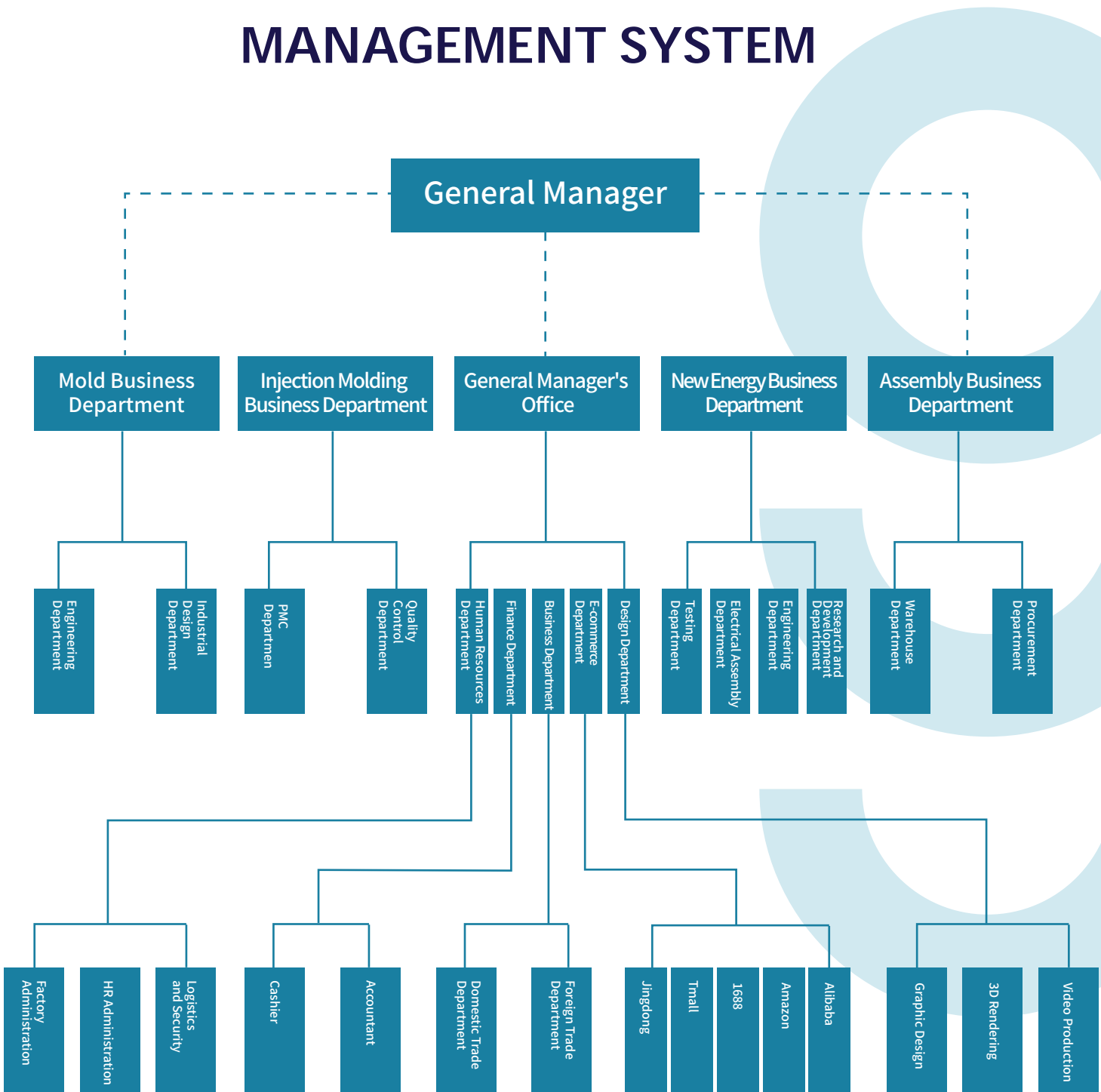


Q85 TYPE 1 FOR  
CONNECTOR

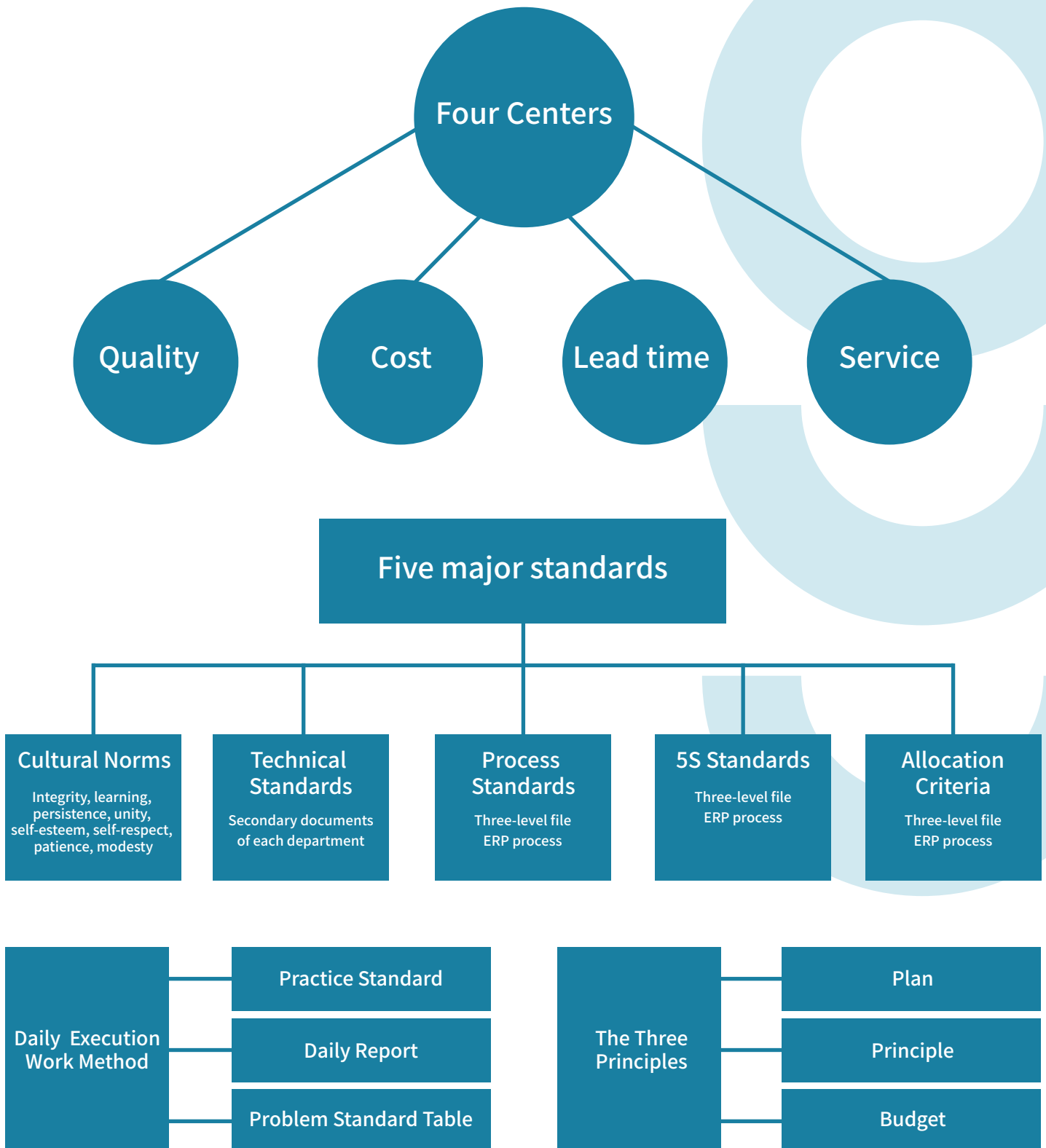
## SPECIFICATION

Input voltage	AC100-250V
Output voltage	AC100-250V
Output current	>16A
Contact resistance	<0.5mΩ
Efficiency	≥99.9
Insulation resistance	≥500MΩ (Normal Temp)
Flame Retardant Class	UL94V-0
Plug and Pull life	10000 times (No Load)
Operating ambient temperature	-30°C~+50°C
Storage ambient temperature	-40°C~+80°C
Degree of protection	IP55
Plug and Pull Force	<80N

# MANAGEMENT SYSTEM



# COMPANY MANAGEMENT PHILOSOPHY



**OFFICE**



**MOLD DEPARTMENT**





## INJECTION DEPARTMENT



## ASSEMBLY DEPARTMENT



**PRODUCT EQUIPMENT**

Constant Temperature and Humidity Test Chamber



Ultra-quiet Terminal Machine



CNC



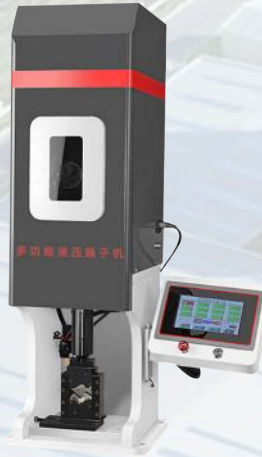
AC Single-Phase and Three-Phase Charging Connector Comprehensive Test System



AC EV Charger Comprehensive Test Instrument

**PRODUCT EQUIPMENT**

Intelligent Pneumatic Hydraulic Terminal Machine



Salt Corrosion Test Machine



Wear Resistance Testing Machine



Hot Melt Press Machine



Falling Ball Impact Test Machine



Wire Cutting Machine



Fully Automatic High-Speed Screw Machine



**QUALIFICATION AND STRENGTH**



Company Certification

Honorary award



Product certification





**OUR VISION:**

To charge the ongoing environmental revolution for a pollution-free future.

The logo features the word "QIAO" in a bold, white, sans-serif font. The letter "Q" is stylized with a teal-colored tail that curves downwards and to the left. To the right of the "O" are two overlapping, semi-transparent purple shapes that resemble the rear view of a car or a stylized "D" shape. Below the word "QIAO" is the tagline "CHARGE UP, DRIVE ON." in a smaller, white, sans-serif font. The entire logo is centered within a dark blue circle, which is itself centered within a larger purple circle, all set against a dark blue background.

**QIAO**  
CHARGE UP, DRIVE ON.

# QIAO

CHARGE UP, DRIVE ON.



TRUST  
INNOVATION  
COURAGE  
SUPPORT  
COMPASSION

Shenzhen Qunchuang New Energy Co., Ltd

E-mail: [info@qiaocharger.com](mailto:info@qiaocharger.com)

Website: [https:// www.qiaocharger.com](https://www.qiaocharger.com)

Address: Building 12, Third Industrial Zone, Xitian Community, Gongming Street,  
Guangming New District, Shenzhen City, Guangdong Province, China