



QIAO 
CHARGE UP, DRIVE ON.



QIAO 
CHARGE UP,
DRIVE ON.

Providing reliable and convenient power to
electric vehicles all over the world.

BROCHURE

TRUST
INNOVATION
COURAGE
SUPPORT
COMPASSION

Shenzhen Qunchuang New Energy Co.,Ltd
E-mail: info@qiaocharger.com
Website: <https://www.qiaocharger.com>
Address: Building 12, Third Industrial Zone, Xitian Community, Gongming Street,
Guangming New District, Shenzhen City, Guangdong Province, China



OUR STORY

At QIAO, our mission is to provide reliable and convenient power to electric vehicles all over the world. We believe that the most practical and often overlooked products tend to play the biggest role in ushering modern day conveniences, technological advancements, and sustainable practices into our daily lives. That's why we've dedicated ourselves to designing and producing high-quality car chargers that provide reliable power to all types of electric vehicles. We're driven to usher our society into a future with less fossil fuel consumption and vehicular pollution. Through our trusted products and dedicated give-back programs, we're working to create more efficient transportation methods and a cleaner environment for all. It's time to charge up and drive on. Join us for the ride.

OUR MISSION

To provide reliable and convenient power to electric vehicles all over the world.

OUR VISION

To charge the ongoing environmental revolution for a pollution-free future.



WHY

We want to provide reliable and convenient power to electric vehicles all over the world while building towards a pollution-free future.

WHO

Our primary customers are businesses (B2B) that sell or provide car charging stations to customers. Our secondary customers are individual consumers (B2C) who own electric vehicles.

WHAT

We produce a selection of high-quality, safe, and dependable electric vehicle charging stations and accessories.

WHERE

Our products are available to easily view, learn more about, and order online - primarily via our website.

CORE VALUES

TRUST

We strive to earn the trust of our customers by providing consistently high-quality products and transparent and attentive customer service.

INNOVATION

Out-of-the-box thinking propels ground-breaking designs, optimized systems, and inventions that improve our quality of life and the health of the world around us.

COURAGE

Courage is a vital trait required to build a future with more technological efficiency, less pollution, better products, and a higher quality of life for all.

SUPPORT

Our products support the efficient operation of electric vehicles, our team supports one another, and our customer service team supports our valued clients.

COMPASSION

Whether we're communicating with customers, working with colleagues, thoughtfully designing our products, or participating in our give-back initiatives, we operate with compassion as our north star.



COMPANY PROFILE

Founded in 2006, Qunchuang New Energy is the global marketing and intelligent manufacturing center of Intelligent Manufacturing, headquartered in Shenzhen, the capital of science and technology manufacturing. Qunchuang New Energy has a 5A-level modern office area, over 6,000 square meters of high-end intelligent manufacturing bases, integrating R&D design, mold manufacturing, product production and logistics support. It is a company with a design and R&D team of more than 30 members and a production and manufacturing team of more than 300 members, Qunchuang New Energy is a certified high-tech enterprise with more than 60 international design awards and nearly 70 patents.

Relying on excellent R&D and high-end intelligent manufacturing capabilities, and technical research and cooperation with professional scientific research institutions and colleges at home and abroad, Qunchuang New Energy has developed nearly 100 variations of wall-mounted EV chargers, portable EV chargers and peripheral innovative products in the field of renewable energy vehicle charging equipment. Qunchuang New Energy combines practicality and creativity with design, blends perfect colors and shapes, seeks trend-sensitive modern fashion styles, and constantly presents fashionable, passionate and innovative high-quality products in front of you, thus winning the trust and recognition of consumers and customers.

Qunchuang aspires to be the driver of global renewable energy development and takes providing the best renewable energy electric and ecological travel solutions as its goal, it continues to innovate and challenge itself on a global scale. Qunchuang has established a long-term and stable cooperative relationship with many automobile sellers, retailers and terminal agents, taking the international strategy to a new level.



19 YEAR

CHARGE UP
DRIVE ON

ENTERPRISE MISSION

To provide reliable and convenient power to electric vehicles all over the world.

ENTERPRISE VISION

To charge the ongoing environmental revolution for a pollution-free future.

VALUES

Trust, innovation, courage, support compassion

BRAND ROAD



Established in 2005, Times Weiye Plastic Hardware is a large-scale production enterprises specializing in providing customers with mold opening, injection molding, manufacturing and other services in one.

2005



In 2009, in response to the development needs of the times, Shenzhen Qunchuang Electronics Co., Ltd. is a technology-based enterprise specializing in manufacturing molds and designing and developing various digital products, and it is divided into industrial design department, mold development department, injection molding department and assembly department.

2009



In September 2014, our company passed ISO9001:2000 and system certification.

2014



In 2018, our company successively reached strategic cooperation with well-known enterprises such as Xiaomi, 360, Alibaba, Skyworth, and Haier etc..

2018



In 2019, in order to expand the scale and office needs, our company moved to a 6500-square-meter independent factory building, creating a management team that has produced for Panasonic and Philips.

2019



In 2020, our company officially entered the new energy AC EV charger industry, established a new energy business department, and created a software and hardware development team of more than 30 people.

2020



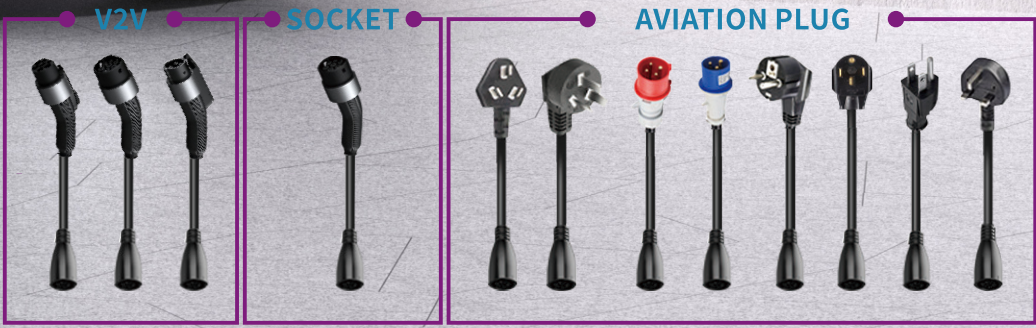
In 2022, 8 series of products including wall-mounted charger, portable charger, charging connector, adapter, connector holder, double-headed connector with cable, extension cable and electrical appliances was completed.

2022



In 2023, the global brand QIAOCC was established and its products will be sold all over the world.

2023



OUR PRODUCTS

WALL-MOUNTED AC EV CHARGER



Q5

Q6

Q7

Q8

EV CHARGER CONNECTOR



Type GB/T

Type 2

Type 1

Type Tesla

PORTABLE AC EV CHARGER



Q20

Q21

ADAPTER



Type 1 To Type Tesla

Type Tesla To Type 1

Type GB/T To Type 2

Type 2 To Type GB/T Gen 1

Type 2 To Type GB/T Gen 2

CONNECTOR HOLDER



Type GB/T



Type Tesla



Type 1



Type 2

EXTENSION CABLE



Type GB/T



Type 2



Type 1



Tesla

EV CHARGING CABLE



Type GB/T



Type 2

DISCHARGER



Type GB/T for car



Type GB/T for connector



Type 2 for car



Type 2 for connector



Type 1 for car



Type 1 for connector

Q9 Wall-mounted and Portable 2-in-1 AT HOME & OUTDOOR

PRODUCT VERSION:

Type 1 Type 2 Type Tesla Type GB/T

POWER:

3.5KW

CURRENT:

6A-16A (Adjustable)



Q9 SPECIFICATION

Specification classification	Item	Parameter
Input	Power supply type	Single phase
	Rated power	3.5KW
	Voltage	AC220/240V
	Current	16A
	Frequency	50/60Hz
Output	Rated power	3.5KW
	Voltage	AC220/240V
	Current	16A
Function	Frequency	50/60Hz
	Starting mode	Plug and charge
	Display type	2.8 inch Color LCD Display
	Network	Bluetooth/wifi
	DLB	Non-supported
Protection	OCPP	Non-supported
	RCD	Type A+DC 6mA
	Electrical protection	Overvoltage protection, undervoltage protection, grounding protection, lightning protection, leakage protection, flame retardant protection, overcurrent protection, intelligent temperature control protection, relay adhesion protection, input shutdown protection, automotive-grade vehicle and personnel protection
	Emergency stop	/
	IP rating	IP66
Environment	Fall protection	IK10
	Insulation resistance	≥10MΩ
	Weathering resistance	F1
	Cooling method	Natural cooling
	Operating temperature	-30°C~+50°C
Package	Storage temperature	-40°C~+80°C
	Operating humidity	5% ~95% non-condensing, no dew formation
	Altitude	Not exceeding 2000 meters
Others	Product size	25.5*22.15*17.1 cm
	Charging connector holder	1 piece
Others	Installation type	wall-mounted, pole-mounted
	Power cord	Plug
	Cable length	5.4M
	Material	PC9010
	Warranty period	15 months
	Efficiency	≥98%

Q9 Wall-mounted and Portable 2-in-1 AT HOME & OUTDOOR

PRODUCT VERSION:

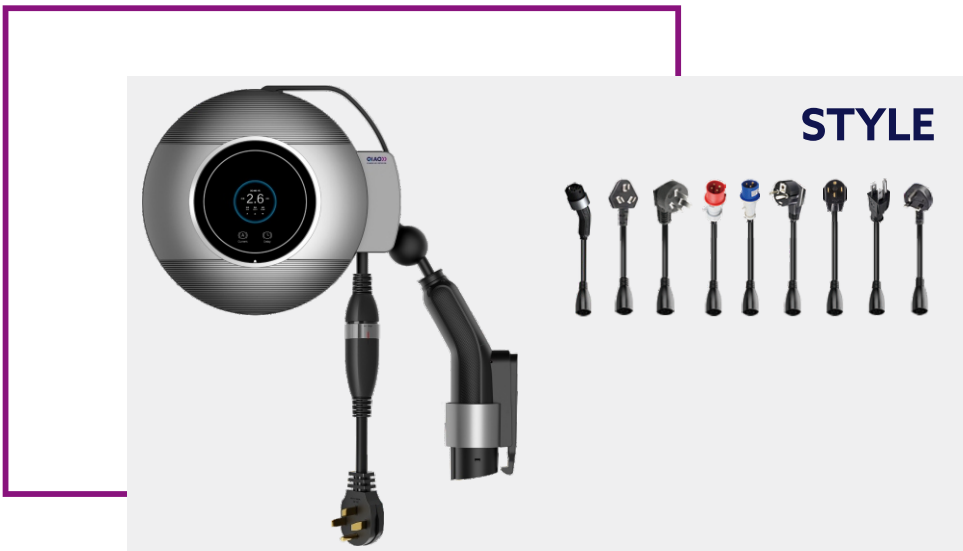
Type 1 Type 2 Type Tesla Type GB/T

POWER:

7KW

CURRENT:

6A-32A (Adjustable)



Q9 SPECIFICATION

Specification classification	Item	Parameter
Input	Power supply type	Single phase
	Rated power	7KW
	Voltage	AC220/240V
	Current	32A
	Frequency	50/60Hz
Output	Rated power	7KW
	Voltage	AC220/240V
	Current	32A
Function	Frequency	50/60Hz
	Starting mode	Plug and charge
	Display type	2.8 inch Color LCD Display
	Network	Bluetooth/wifi
	DLB	Non-supported
Protection	OCPP	Non-supported
	RCD	Type A+DC 6mA
	Electrical protection	Overvoltage protection, undervoltage protection, grounding protection, lightning protection, leakage protection, flame retardant protection, overcurrent protection, intelligent temperature control protection, relay adhesion protection, input shutdown protection, automotive-grade vehicle and personnel protection
	Emergency stop	/
	IP rating	IP66
Environment	Fall protection	IK10
	Insulation resistance	≥10MΩ
	Weathering resistance	F1
	Cooling method	Natural cooling
	Operating temperature	-30°C~+50°C
	Storage temperature	-40°C~+80°C
Package	Operating humidity	5% ~95% non-condensing, no dew formation
	Altitude	Not exceeding 2000 meters
	Product size	25.5*22.15*17.1 cm
Others	Charging connector holder	1 piece
	Installation type	wall-mounted, pole-mounted
Others	Power cord	Plug
	Cable length	4.6M
	Material	PC9010
	Warranty period	15 months
	Efficiency	≥98%

Q5 EV CHARGER

For home

PRODUCT VERSION:

Type 1 Type 2 Type Tesla Type GB/T

POWER:

7KW 11KW 22KW

CURRENT:

16A 32A



STYLE



Fingerprint/password



LED

Q5 SPECIFICATION

Specification classification	Item	Parameter	
Input	Power supply type	Single phase, three phase	
	Rated power	7KW / 11KW / 22KW	
	Voltage	Single-phase (120-240V), three-phase (380-400V)	
	Current	16A, 32A	
	Frequency	50/60Hz	
Output	Rated power	7KW / 11KW / 22KW	
	Voltage	Single-phase (120-240V), three-phase (380-400V)	
	Current	16A, 32A	
	Frequency	50/60Hz	
Function	Starting mode	Plug and charge, fingerprint/password, RFID, remote reservation	
	Display type	LED	
	Network	Bluetooth/wifi	
	DLB	Non-supported	
	OCPP	Non-supported	
Protection	RCD	Type A, Type A+6, CCID20	
	Electrical protection	Input overvoltage, Low temperature discharge, Output short circuit, Anti-lightning strike, Charging overvoltage, Charging overcurrent, High temperature charging, Low temperature charging, Discharge undervoltage, Discharge overcurrent, High temperature discharging.	
	Emergency stop	Support	
	IP rating	IP66	
	Fall protection	IK10	
	Insulation resistance	≥10MΩ	
	Weathering resistance	F1	
	Environment	Cooling method	Natural cooling
		Operating temperature	-30°C~+50°C
		Storage temperature	-40°C~+80°C
Operating humidity		5%~95%	
Altitude		<2000M	
Package	Product size	23*16*7.5 cm	
	Charging connector holder	1 piece	
Others	Installation type	wall-mounted, pole-mounted	
	Power cord	Plug, hardwired	
	Cable length	5M or 7.62M	
	Material	PC9010	
	Warranty period	15 months	
	Efficiency	≥98%	

Q6 EV CHARGER

For Home & Commercial

PRODUCT VERSION:

Type GB/T Type 1 Type 2 Type Tesla

POWER:

7KW 11KW 22KW

CURRENT:

16A 32A 40A 48A



STYLE



DLB



4.3-inch
Screen



7-inch
Screen



LED



fingerprint
password

Q6 SPECIFICATION

Specification classification	Item	Parameter	
Input	Power supply type	Single phase, three phase	
	Rated power	7KW / 11KW / 22KW	
	Voltage	Single-phase (120-240V), three-phase (380-400V)	
	Current	16A, 32A, 40A, 48A	
	Frequency	50/60Hz	
Output	Rated power	7KW / 11KW / 22KW	
	Voltage	Single-phase (120-240V), three-phase (380-400V)	
	Current	16A, 32A, 40A, 48A	
Function	Frequency	50/60Hz	
	Starting mode	Plug and charge, Fingerprint/password, RFID, remote reservation	
	Display type	LED, LCD 4.3 inch, LCD 7 inch	
	Network	4G, Ethernet, Bluetooth/wifi	
	DLB	Support	
Protection	OCPP	Support	
	RCD	Type A, Type A+6, CCID20	
	Electrical protection	Input overvoltage, Low temperature discharge, Output short circuit, Anti-lightning strike, Charging overvoltage, Charging overcurrent, High temperature charging, Low temperature charging, Discharge undervoltage, Discharge overcurrent, High temperature discharging.	
	Emergency stop	Support	
	IP rating	IP66	
	Fall protection	IK10	
	Insulation resistance	≥10MΩ	
	Weathering resistance	F1	
	Environment	Cooling method	Natural cooling
		Operating temperature	-30°C~+50°C
Storage temperature		-40°C~+80°C	
Operating humidity		5%~95%	
Altitude		<2000M	
Package	Product size	30*18*12cm	
	Charging connector holder	1 piece	
Others	Installation type	Wall-mounted, pole-mounted	
	Power cord	Plug, hardwired	
	Cable length	5M or 7.62M	
	Material	PC9010	
	Warranty period	15 months	
	Efficiency	≥98%	

Q7 EV CHARGER

For home & Commercial

PRODUCT VERSION:

Type 2 Type GB/T

POWER:

7KW 11KW 22KW

CURRENT:

16A 32A



Q7 SPECIFICATION

Specification classification	Item	Parameter	
Input	Power supply type	Single phase, three phase	
	Rated power	7KW / 11KW / 22KW	
	Voltage	Single-phase (230-240V), three-phase (380-400V)	
	Current	16A, 32A	
	Frequency	50/60Hz	
Output	Rated power	7KW / 11KW / 22KW	
	Voltage	Single-phase (230-240V), three-phase (380-400V)	
	Current	16A, 32A	
Function	Frequency	50/60Hz	
	Starting mode	Plug and charge, RFID, QR	
	Display type	LCD 3.5 inch	
	Network	4G, Ethernet (RJ45)	
	DLB	Non-supported	
Protection	OCP	Support	
	RCD	Type A, Type A+6, CCID20	
	Electrical protection	Input overvoltage, Low temperature discharge, Output short circuit, Anti-lightning strike, Charging overvoltage, Charging overcurrent, High temperature charging, Low temperature charging, Discharge undervoltage, Discharge overcurrent, High temperature discharging.	
	Emergency stop	Support	
	IP rating	IP66	
	Fall protection	IK10	
	Insulation resistance	≥10MΩ	
	Weathering resistance	F1	
	Environment	Cooling method	Natural cooling
		Operating temperature	-30°C~+50°C
Storage temperature		-40°C~+80°C	
Operating humidity		5%~95%	
Package	Altitude	<2000M	
	Product size	30*18*12cm	
	Charging connector holder	1 piece	
Others	Installation type	wall-mounted, pole-mounted	
	Power cord	Plug, hardwired	
	Cable length	/	
	Material	PC9010	
	Warranty period	15 months	
Efficiency	≥98%		

Q8 EV CHARGER

For home & Commercial

PRODUCT VERSION:

Type 1 Type 2 Type Tesla Type GB/T

POWER:

7KW 11KW 22KW

CURRENT:

16A 32A 40A 48A



STYLE



4.3-inch
Screen



LED

Q8 SPECIFICATION

Specification classification	Item	Parameter	
Input	Power supply type	Single phase, three phase	
	Rated power	7KW / 11KW / 22KW	
	Voltage	Single-phase (120-240V), three-phase (380-400V)	
	Current	16A, 32A, 40A, 48A	
	Frequency	50/60Hz	
Output	Rated power	7KW / 11KW / 22KW	
	Voltage	Single-phase (120-240V), three-phase (380-400V)	
	Current	16A, 32A, 40A, 48A	
	Frequency	50/60Hz	
Function	Starting mode	Plug and charge, RFID, remote reservation	
	Display type	LED, LCD 4.3 inch	
	Network	4G, Ethernet, Bluetooth/wifi	
	DLB	Non-supported	
	OCP	Support	
Protection	RCD	Type A, Type A+6, CCID20	
	Electrical protection	Input overvoltage, Low temperature discharge, Output short circuit, Anti-lightning strike, Charging overvoltage, Charging overcurrent, High temperature charging, Low temperature charging, Discharge undervoltage, Discharge overcurrent, High temperature discharging.	
	Emergency stop	Support	
	IP rating	IP66	
	Fall protection	IK10	
	Insulation resistance	≥10MΩ	
	Weathering resistance	F1	
	Environment	Cooling method	Natural cooling
		Operating temperature	-30°C~+50°C
		Storage temperature	-40°C~+80°C
Operating humidity		5%~95%	
Package	Altitude	<2000M	
	Product size	30*18*12cm	
	Charging connector holder	1 piece	
Others	Installation type	wall-mounted, pole-mounted	
	Power cord	Plug, hardwired	
	Cable length	5M or 7.62M	
	Material	PC9010	
	Warranty period	15 months	
	Efficiency	≥98%	

Q20 2 IN 1 PORTABLE EV CHARGER

AT HOME & OUTDOOR

PRODUCT VERSION:

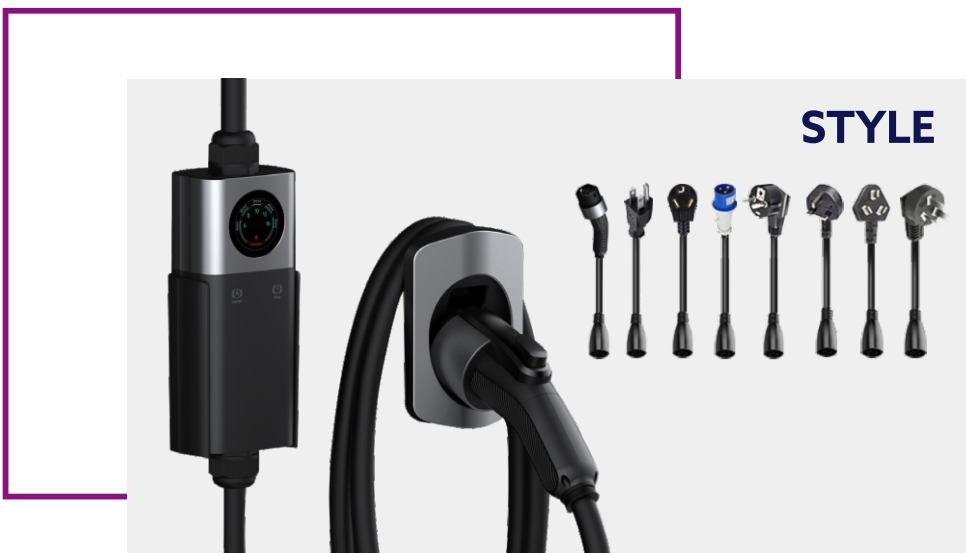
Type 1 Type 2 Type Tesla Type GB/T

POWER:

3.5KW 7KW

CURRENT:

16A to 32A



Q20 SPECIFICATION

Specification classification	Item	Parameter	
Input	Power supply type	Single phase	
	Rated power	3.5KW / 7KW	
	Voltage	Single-phase (120V-240V)	
	Current	16A to 32A	
	Frequency	50/60Hz	
Output	Rated power	3.5KW / 7KW	
	Voltage	Single-phase (120V-240V)	
	Current	16A to 32A	
Function	Frequency	50/60Hz	
	Starting mode	Plug and charge, remote reservation	
	Display type	LED, LCD 2.8 inch	
	Network	Bluetooth/wifi	
	DLB	Non-supported	
Protection	OCP	Non-supported	
	RCD	Type A, Type A+6, CCID20	
	Electrical protection	Input overvoltage, Low temperature discharge, Output short circuit, Anti-lightning strike, Charging overvoltage, Charging overcurrent, High temperature charging, Low temperature charging, Discharge undervoltage, Discharge overcurrent, High temperature discharging.	
	Emergency stop	/	
	IP rating	IP66	
	Fall protection	IK10	
	Insulation resistance	≥10MΩ	
	Weathering resistance	F1	
	Environment	Cooling method	Natural cooling
		Operating temperature	-30°C~+50°C
Storage temperature		-40°C~+80°C	
Operating humidity		5%~95%	
Package	Altitude	<2000M	
	Product size	26.5*9.6*6.8cm	
Others	Charging connector holder	1 piece	
	Installation type	wall-mounted, pole-mounted	
	Power cord	Plug	
	Cable length	5M	
	Material	PC9010	
Warranty period	15 months		
Efficiency	≥98%		

Q21 2 IN 1 PORTABLE EV CHARGER

AT HOME & OUTDOOR

PRODUCT VERSION:

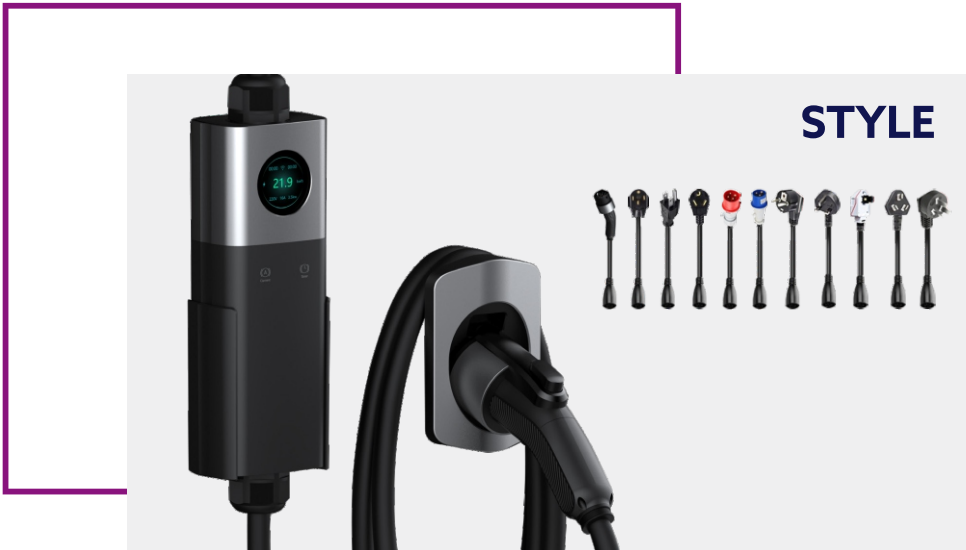
Type 1	Type 2	Type Tesla	Type GB/T
--------	--------	------------	-----------

POWER:

7KW	9.6KW	11KW	22KW
-----	-------	------	------

CURRENT:

16A to 40A



STYLE

Q21 SPECIFICATION

Specification classification	Item	Parameter
Input	Power supply type	Single phase, three phase
	Rated power	7KW / 9.6KW / 11KW / 22KW
	Voltage	Single-phase (120-240V), three-phase (380-400V)
	Current	16A to 40A
	Frequency	50/60Hz
Output	Rated power	7KW / 9.6KW / 11KW / 22KW
	Voltage	Single-phase (120-240V), three-phase (380-400V)
	Current	16A to 40A
Function	Frequency	50/60Hz
	Starting mode	Plug and charge, remote reservation
	Display type	LED, LCD 2.8 inch
	Network	Bluetooth/wifi
	DLB	Non-supported
Protection	OCP	Non-supported
	RCD	Type A, Type A+6, CCID20
	Electrical protection	Input overvoltage, Low temperature discharge, Output short circuit, Anti-lightning strike, Charging overvoltage, Charging overcurrent, High temperature charging, Low temperature charging, Discharge undervoltage, Discharge overcurrent, High temperature discharging.
	Emergency stop	/
	IP rating	IP66
	Fall protection	IK10
	Insulation resistance	≥10MΩ
Environment	Weathering resistance	F1
	Cooling method	Natural cooling
	Operating temperature	-30°C~+50°C
	Storage temperature	-40°C~+80°C
	Operating humidity	5%~95%
Package	Altitude	<2000M
	Product size	33.5*9.8*7cm
	Charging connector holder	1 piece
Others	Installation type	wall-mounted, pole-mounted
	Power cord	Plug
	Cable length	5M
	Material	PC9010
	Warranty period	15 months
	Efficiency	≥98%

EV CHARGER CONNECTOR



Q30 TYPE GB/T



Q31 TYPE 2



Q32 TYPE 1



Q33 TESLA

SPECIFICATION				
MODEL	POWER	CABLE SPECIFICATION	CABLE MATERIAL	CABLE LENGTH
Q30 TYPE GB/T	3.5KW/16A/single phase	3*2.5mm ² +1*0.75mm ²	TPE	5M or Customization
	7KW/32A/single phase	3*6mm ² +1*0.75mm ²	TPE	5M or Customization
	11KW/16A/three phase	5*2.5mm ² +1*0.75mm ²	TPE	5M or Customization
	22KW/32A/three phase	5*6mm ² +1*0.75mm ²	TPE	5M or Customization
Q31 TYPE 2	3.5KW/16A/single phase	3*2.5mm ² +1*0.75mm ²	TPE	5M or Customization
	7KW/32A/single phase	3*6mm ² +1*0.75mm ²	TPE	5M or Customization
	11KW/16A/three phase	5*2.5mm ² +1*0.75mm ²	TPE	5M or Customization
	22KW/32A/three phase	5*6mm ² +1*0.75mm ²	TPE	5M or Customization
Q32 TYPE 1	3.5KW/16A/single phase	3*14AWG+1*18AWG	TPE	7.62M or Customization
	7KW/32A/single phase	3*10AWG+1*18AWG	TPE	7.62M or Customization
	11KW/48A/single phase	2*8AWG+1*10AWG+1*18AWG	TPE	7.62M or Customization
Q33 TESLA	3.5KW/16A/single phase	3*14AWG+1*18AWG	TPE	7.62M or Customization
	7KW/32A/single phase	3*10AWG+1*18AWG	TPE	7.62M or Customization
	11KW/48A/single phase	2*8AWG+1*10AWG+1*18AWG	TPE	7.62M or Customization

ADAPTER



Q40 TYPE 1 TO TESLA



Q41 TESLA TO TYPE 1



Q42 TYPE 2 TO
TYPE GB/T 1ST GEN

MODEL	SPECIFICATION	
Q40 TYPE 1 TO TESLA	Input voltage: AC100-240V	Output voltage: AC100-240V
	Output current: >60A	Efficiency: ≥98
	Contact resistance: <0.5MΩ	Insulation resistance: 500MΩ
	Flame Retardant Class: UL94V-0	Plug and Pull life: 10000
	Operating ambient temperature: -30°C~+55°C	Storage ambient temperature: -40°C~+80°C
	IP rating: IP55	Body Size: 100*65*53mm
	Gift Box Size: 110*70*60mm	Weight: 0.3Kg
Q41 TESLA TO TYPE 1	Input voltage: AC100-240V	Output voltage: AC100-240V
	Output current: >60A	Efficiency: ≥98
	Contact resistance: <0.5MΩ	Insulation resistance: 500MΩ
	Flame Retardant Class: UL94V-0	Plug and Pull life: 10000
	Operating ambient temperature: -30°C~+55°C	Storage ambient temperature: -40°C~+80°C
	IP Grade: IP55	Body Size: 120*70*58mm
	Gift Box Size: 130mmx65mmx70mm	Weight: 0.4Kg
Q42 TYPE 2 TO TYPE GB/T 1ST GEN	Input voltage: AC100-400V	Output voltage: AC100-400V
	Output current: >50A	Efficiency: ≥98
	Contact resistance: <0.5MΩ	Insulation resistance: 500MΩ
	Flame Retardant Class: UL94V-0	Plug and Pull life: 10000
	Operating ambient temperature: -30°C~+55°C	Storage ambient temperature: -40°C~+80°C
	IP Grade: IP55	Body Size: 129*69*92mm
	Gift Box Size: 130*72*85mm	Weight: 0.4Kg

CONNECTOR HOLDER



Q50 TYPE GB/T



Q51 TYPE 2



Q52 TYPE 1



Q53 TYPE TESLA

MODEL	SPECIFICATION
Q50 TYPE GB/T	Material:PC940
	Working Temperature: -30°C~+50°C
	Body Size:103.45*73*151.45mm
	Weight:220g/240g
	QTY:45 pcs
Q51 TYPE 2	Material:PC940
	Working Temperature: -30°C~+50°C
	Body Size:103.45*73*151.45mm
	Weight:220g/240g
	QTY:45 pcs
Q52 TYPE 1	Material:PC940
	Working Temperature: -30°C~+50°C
	Body Size:103.45*73*151.45mm
	Weight:220g/240g
	QTY:45 pcs
Q53 TYPE TESLA	Material:PC940
	Working Temperature: -30°C~+50°C
	Body Size:103.45*73*151.45mm
	Weight:220g/240g
	QTY:45 pcs

CHARGING CABLE



Q60 TYPE GB/T



Q61 TYPE 2

MODEL	POWER	SPECIFICATION		
		SPECIFICATION	CABLE MATERIAL	CABLE LENGTH
Q60 TYPE GB/T	3.5KW/16A/single phase	3*2.5mm ² +1*0.75mm ²	TPE	5M or Customization
	7KW/32A/single phase	3*6mm ² +1*0.75mm ²	TPE	5M or Customization
	11KW/16A/three phase	5*2.5mm ² +1*0.75mm ²	TPE	5M or Customization
	22KW/32A/three phase	5*6mm ² +1*0.75mm ²	TPE	5M or Customization
Q61 TYPE 2	3.5KW/16A/single phase	3*2.5mm ² +1*0.75mm ²	TPU	5M or Customization
	7KW/32A/single phase	3*6mm ² +1*0.75mm ²	TPU	5M or Customization
	11KW/16A/three phase	5*2.5mm ² +1*0.75mm ²	TPU	5M or Customization
	22KW/32A/three phase	5*6mm ² +1*0.75mm ²	TPU	5M or Customization

EXTENSION CABLE



Q70 TYPE GB/T

Q71 TYPE 2

Q72 TYPE 1

Q73 TESLA

SPECIFICATION				
MODEL	POWER	SPECIFICATION	CABLE MATERIAL	CABLE LENGTH
Q70 TYPE GB/T	3.5KW/16A/single phase	3*2.5mm ² +1*0.75mm ²	TPE	5M or Customization
	7KW/32A/single phase	3*6mm ² +1*0.75mm ²	TPE	5M or Customization
	11KW/16A/three phase	5*2.5mm ² +1*0.75mm ²	TPE	5M or Customization
	22KW/32A/three phase	5*6mm ² +1*0.75mm ²	TPE	5M or Customization
Q71 TYPE 2	3.5KW/16A/single phase	3*2.5mm ² +1*0.75mm ²	TPU	5M or Customization
	7KW/32A/single phase	3*6mm ² +1*0.75mm ²	TPU	5M or Customization
	11KW/16A/three phase	5*2.5mm ² +1*0.75mm ²	TPU	5M or Customization
	22KW/32A/three phase	5*6mm ² +1*0.75mm ²	TPU	5M or Customization
Q72 TYPE 1	3.5KW/16A/single phase	3*14AWG+1*18AWG	TPE	5M or Customization
	7KW/32A/single phase	3*10AWG+1*18AWG	TPE	5M or Customization
	11KW/16A/single phase	2*8AWG+1*10AWG+1*18AWG	TPE	5M or Customization
Q73 TESLA	3.5KW/16A/single phase	3*14AWG+1*18AWG	TPE	5M or Customization
	7KW/32A/single phase	3*10AWG+1*18AWG	TPE	5M or Customization
	11KW/16A/single phase	2*8AWG+1*10AWG+1*18AWG	TPE	5M or Customization

DISCHARGER



Q80 TYPE GB/T FOR CAR



Q81 TYPE GB/T FOR CONNECTOR



Q82 TYPE 2 FOR CAR



Q83 TYPE 2 FOR CONNECTOR



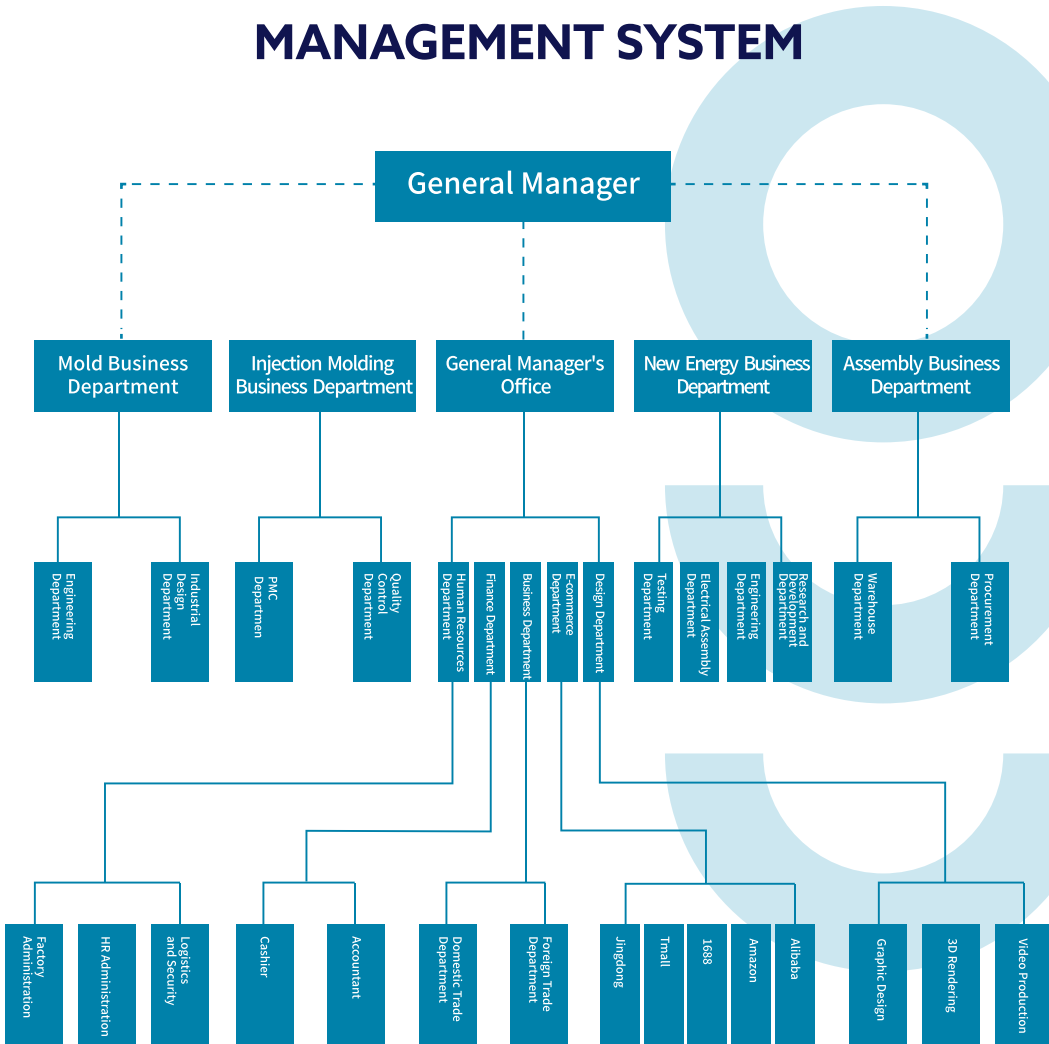
Q84 TYPE 1 FOR CAR



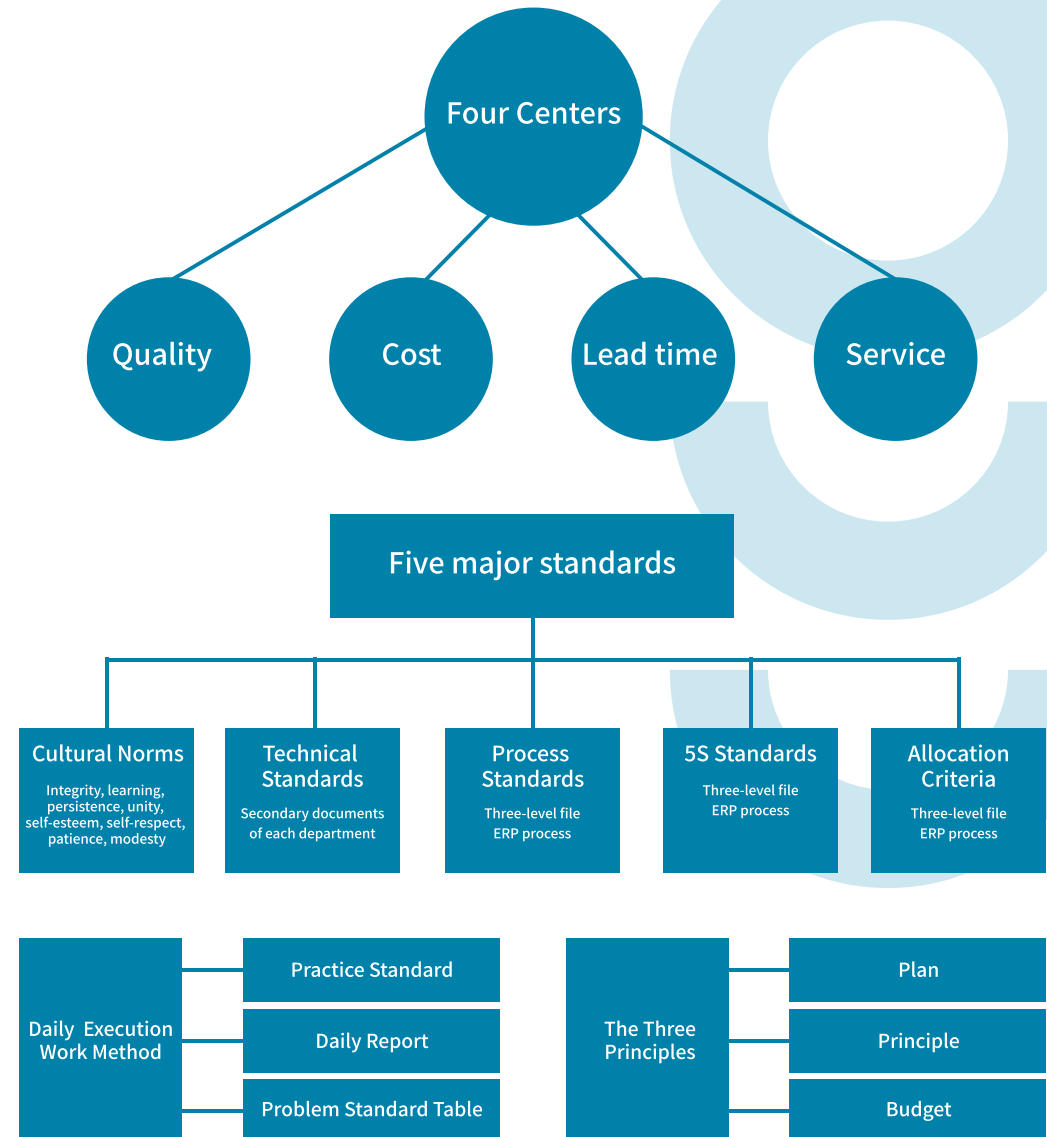
Q85 TYPE 1 FOR CONNECTOR

SPECIFICATION	
Input voltage	AC100-250V
Output voltage	AC100-250V
Output current	>16A
Contact resistance	<0.5mΩ
Efficiency	≥99.9
Insulation resistance	≥500MΩ (Normal Temp)
Flame Retardant Class	UL94V-0
Plug and Pull life	10000 times (No Load)
Operating ambient temperature	-30°C~+50°C
Storage ambient temperature	-40°C~+80°C
Degree of protection	IP55
Plug and Pull Force	<80N

MANAGEMENT SYSTEM



COMPANY MANAGEMENT PHILOSOPHY



OFFICE



INJECTION DEPARTMENT



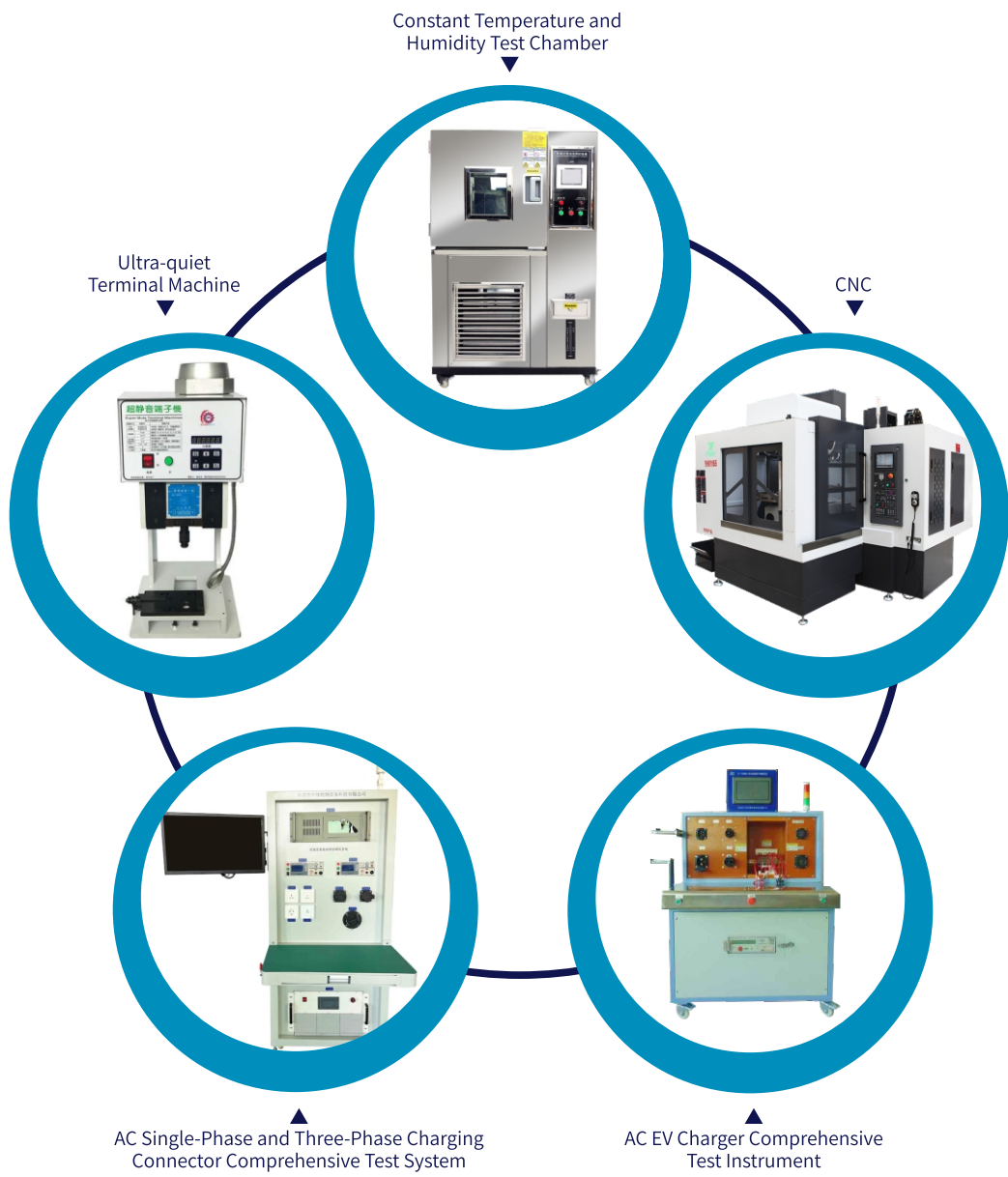
MOLD DEPARTMENT



ASSEMBLY DEPARTMENT



PRODUCT EQUIPMENT



PRODUCT EQUIPMENT



QUALIFICATION AND STRENGTH



Company Certification

Honorary award

QUALIFICATION AND STRENGTH



Design Patent Certificate



Design Patent Certificate



Utility Model Patent



Utility Model Patent

Product certification